

OUR STORY



We create happiness and well-being
by bringing people a healthy, comfortable
and magical in & outdoor environment.
Creating healthy spaces

 **RENSON**[®]
Creating healthy spaces

WHY WE DO, WHAT WE DO

Renson® supplies countless solutions for ventilation, sun protection and outdoor use. But why does Renson® do this? And why is it important to us all that Renson® has and applies these solutions? Why is it important to architects, project developers, governments (schools) and, last but not least, those residing in and using our homes, offices and buildings?

**We will provide a clear answer to this on the following pages.
An answer that will clarify: 'The why behind Renson'.**



VENTILATION



SUNPROTECTION



OUTDOOR







MAN WAS ONCE AN OUTDOORSMAN

Once upon a time.

We lived in and with nature.
In the open air, enjoying the sunshine, wind and water.
Being outside is in our genes.

Because we still feel better when we are outside.
On the beach, in the mountains, in the woods,
on a patio, at a campsite.

Being outside gives us a sense of freedom and well-being.

Being outside activates our senses.

A nighttime cityscape with a highway in the foreground. The highway has light trails from cars, and the city buildings are lit up. The sky is dark blue.

WE NOW SPEND 90% OF OUR TIME INDOORS

Today we spend our time mostly inside,
whether in our homes, places of
work/education or when travelling.

We have evolved into spending the majority
of our time indoors, despite still needing
the benefits that outdoor living brings;
such as **fresh air** and the ideal atmosphere for relaxing.
With the **right temperature and more daylight**,
comfort is guaranteed.





ANTICIPATE A CHANGING CLIMATE

Temperatures have risen due to climate change.

We feel the effects of the sun more often.

We have high concentrations of CO₂ in our buildings.

**We have to make do with less oxygen and
the level of harmful substances in houses is increasing.**

Meanwhile, we have also continued to improve our insulation,
of our walls, roofs and floors; **good for energy saving,
but less beneficial for our health inside our homes.**

And what about our gardens and patios?

Our connection between the inside and the outside,
which we wish to enjoy to the fullest.

**A natural environment that must fit seamlessly
with what we experience inside.**

WE MUST FIND A NEW BALANCE

To us the situation is clear. We must look for a new balance between fresh air, daylight and the right temperature.

Creating an indoor experience that makes us feel good, that fits seamlessly with the outside, that almost feels like outside. That keeps us healthy, fit and active.

That's the challenge that we, and the designers of our homes and buildings of tomorrow, are facing.



FRESH
AIR



AVOID
OVERHEATING



INDOOR
MEETS
OUTDOOR





CHALLENGES FACING DESIGNERS

This concerns Architects, Project Developers and Governments;
who are increasingly involved.

New challenges that set high and new standards.
For the design and construction of our houses and buildings.
The layout of our gardens and patios.

It's not only about the facade! It's not only about energy!
**It's about PEOPLE who want to experience comfort in
and around their home and workplace.**

A place where indoor meets outdoor.

CHALLENGES IN DESIGNING NEW SCHOOLS

IMPROVING PERFORMANCE AND FOCUS

How does the architect ensure that children remain focused in class at school?

If you know that school performance drops drastically at high temperatures and when dirty air is not ventilated in time?





Windesheim Academie - Zwolle, NL
Linus L.050.07

CHALLENGES IN DESIGNING NEW HOSPITALS & CARE HOMES

IMPROVING OUR HEALTH

What about people in hospitals and care homes?

If we know that air and the right light can significantly improve the recovery process;
and prevent deterioration and aging?





AZ Jan Palfijn, Hospital - Gent, BE
Icarus®, Linius®, Fixscreen®

CHALLENGES IN DESIGNING NEW RESIDENCES

IMPROVING OUR LIVES

The right balance between light, air and temperature is essential for us to function, inside our homes.

The connection between the inside of the house and the outside provides a comfortable way of living and brings us happiness.





CHALLENGES IN DESIGNING NEW WORKSPACES

IMPROVING PRODUCTIVITY

Research shows that productivity is greater in offices when there is a balance of fresh air, maximum daylight and the right temperature.

Employees stay focused for longer in buildings with optimal ventilation

And where light and warmth are perfectly matched to their activities.

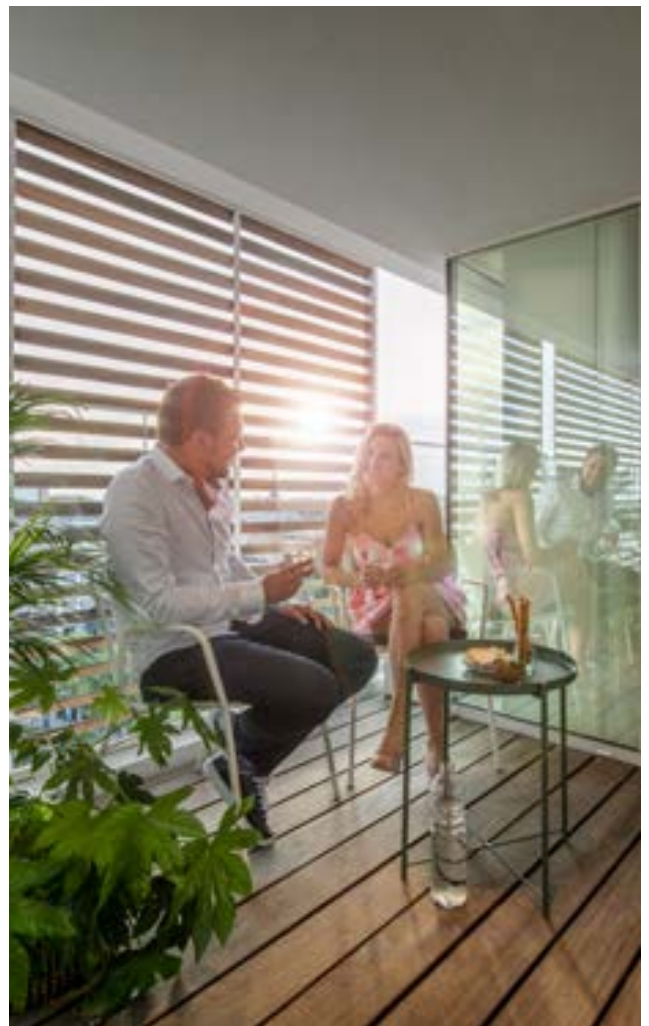


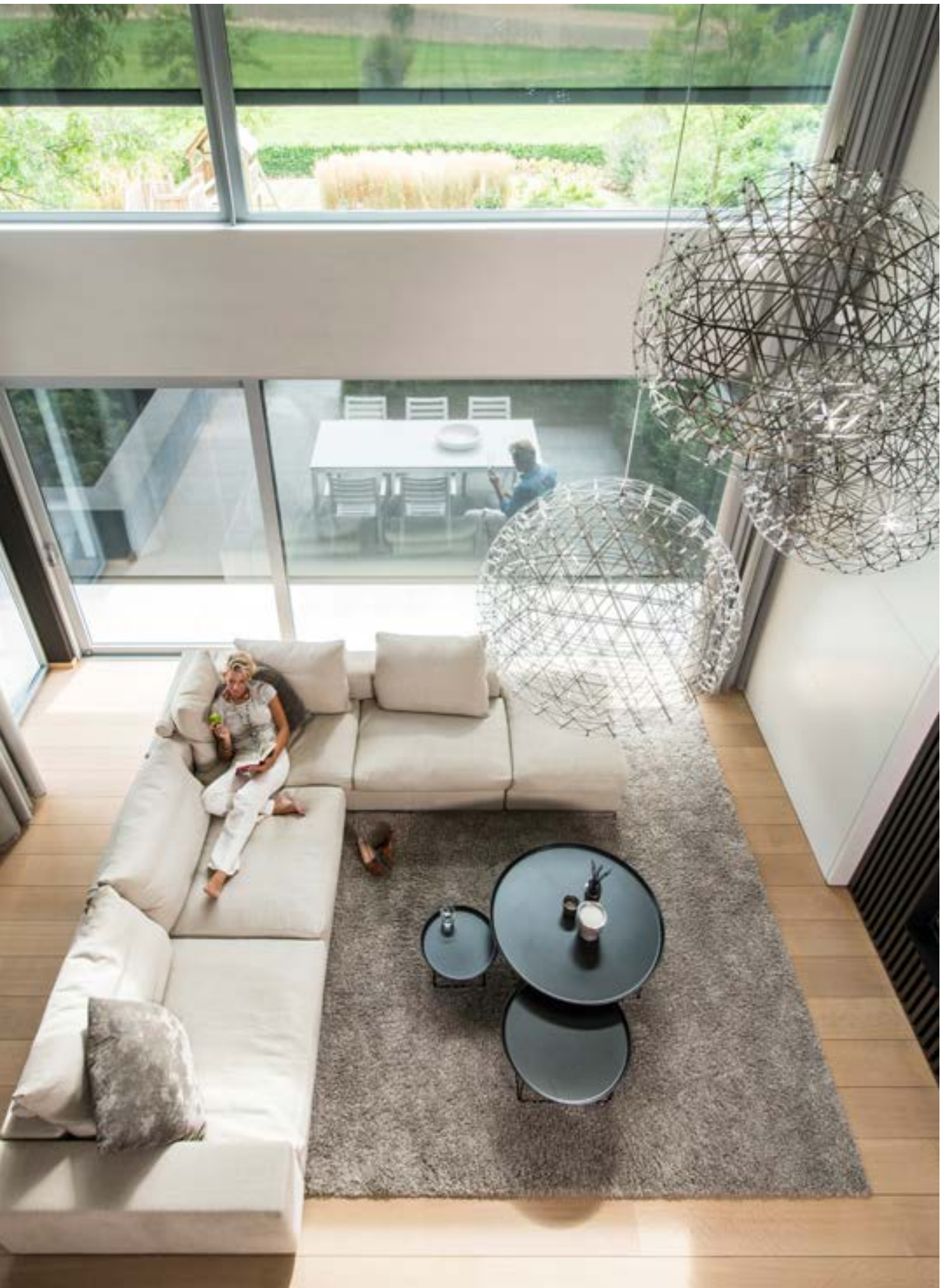


CHALLENGES IN DESIGNING WITH OUR SUPPORT

DESIGNING FOR BETTER HEALTH

With our support, the designer can create spaces that incorporate the benefits of the outside world; promoting a healthy and happy indoor environment.





FACILITATED BY RENSON®

As humans, we need to connect with nature. But, as we've seen, we spend 90% of our time inside. How do we bring nature into our homes?

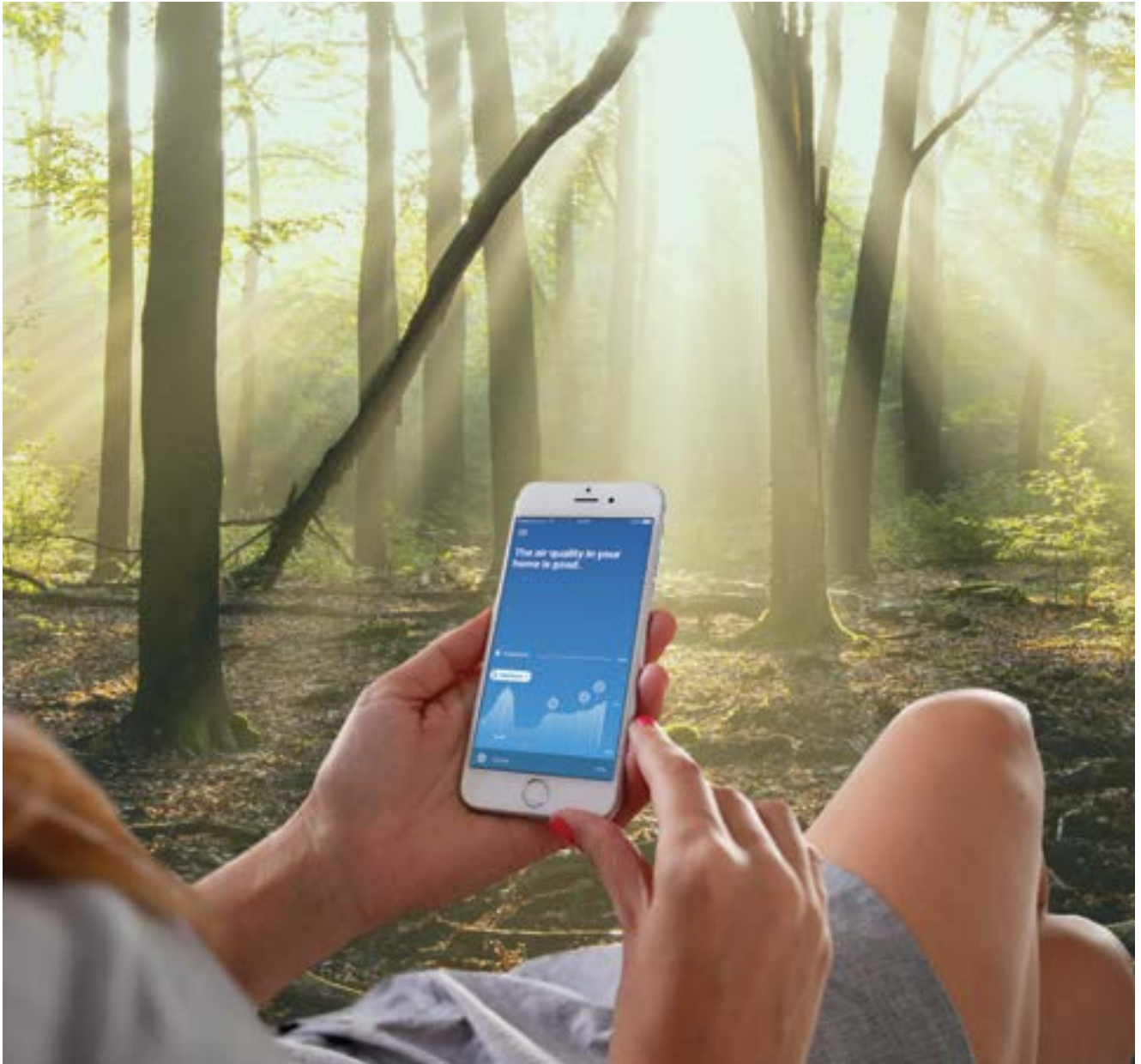
By designing larger windows for maximum daylight.

By choosing natural techniques to bring fresh air into our buildings.

By making sure that people can spend more time on their patio.







SMART VENTILATION



We are unable to see air, so sensors help us to analyse our air quality. A ventilation system must, at minimum, monitor and automatically adjust the humidity, VOC, and CO₂ levels in a house without you having to do this manually.

Not only should ventilation be smart and zoned, it must also take into account the resident's lifestyle and occupancy rate of the property. By adjusting the ventilation level according to these parameters, you can avoid unnecessary energy consumption (on average 50% compared to a non-SmartZone ventilation system).

Every room is used differently. For example: in the bathroom, the biggest problem is the humidity from the shower, while the biggest problem in a toilet is the smell, and, in the bedroom, the CO₂ content. This is the reason why the ventilation level in each room must be regulated separately.

INVISIVENT® RANGE



With the Invisivent, Renson® has developed the most discrete self-regulating window ventilator in the world. Thanks to its self-regulating flap, the Invisivent ensures the supply of fresh and healthy air without draughts. Moreover, the interior profile deflects incoming air upwards, causing an optimal spread of fresh air in the room. **Acoustical** comfort is assured.



HEALTHBOX® 3.0



DEMAND-CONTROLLED VENTILATION

The Healthbox 3.0 measures air quality in the form of CO₂, H₂O and/or VOC [Volatile Organic Compound] concentration (odour) around the clock in every room. The air-extraction rate is varied automatically with the individual parameters, according to the measured air quality. If the air quality in a room is satisfactory, the

flow is reduced. Smart ventilation is only activated when and where it's needed in the house. Sleeping accommodation can also be ventilated, to achieve better air quality. The best possible air quality, with low CO₂ concentrations consequently guarantee a peaceful night's rest. It is a **compact device**, which means that it does not require a lot of installation space.





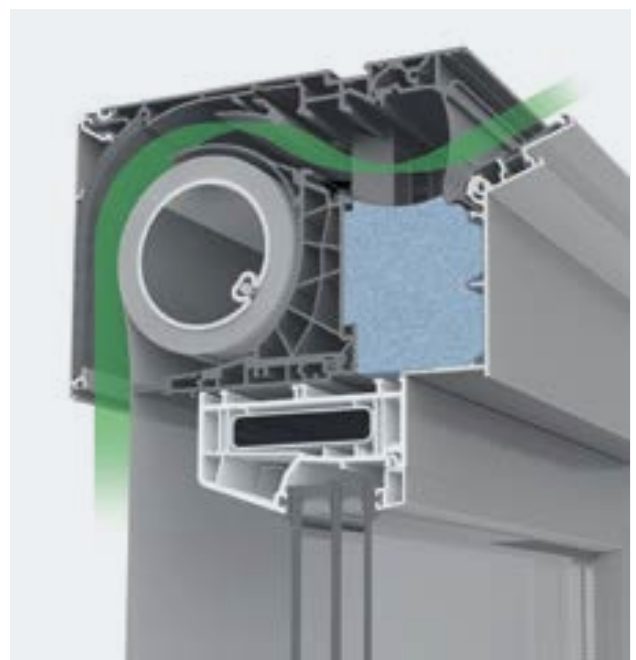
FIXVENT® MONO AK^{EVO}



Discrete ventilation, sun control, acoustic comfort and insect screen all in one. In addition to providing sun control, the Fixvent Mono AK^{EVO} also ensures ventilation and draught protection, thanks to the self-regulating flap, which regulates the supply of fresh air. Wind resistance of up to 130 km/h in a closed position is guaranteed thanks to the Fixscreen technology. Moreover, the screen can be used as an insect screen when closed.

BENEFITS

- Integrated ventilation & sun control
- Draught-free, thanks to self-regulating flap
- High level of acoustic and thermal comfort
- Darken at the touch of a button (optional with Light-block)



NIGHT COOLING



Ventilative cooling, also known as “NIGHTCOOLING,” is the principle where cooler outside air is used to naturally cool down the house.

With ventilative cooling, large natural airflows are conducted into the house via louvres. This air circulation extracts warm air, thus cooling the house. The cool night energy is stored as thermal mass in the house and released during the day, creating a pleasant indoor climate. And this is all completely free of charge. To use night cooling in a house, one or more louvres are located outside the window. Ventilative cooling requires

good air flows. That is the reason for selecting louvres with a large airflow, which also provide reliable ventilation. The louvres are water and insect proof thanks to the design of the blades and integrated insect screen. This allows the windows to be open at night, in order to cool the room. In new buildings, night cooling is built into the design of the house. In existing houses, a louvre can simply be installed in front of each opening window.



Application High-rise building (China)



SUNPROTECION SCREENS

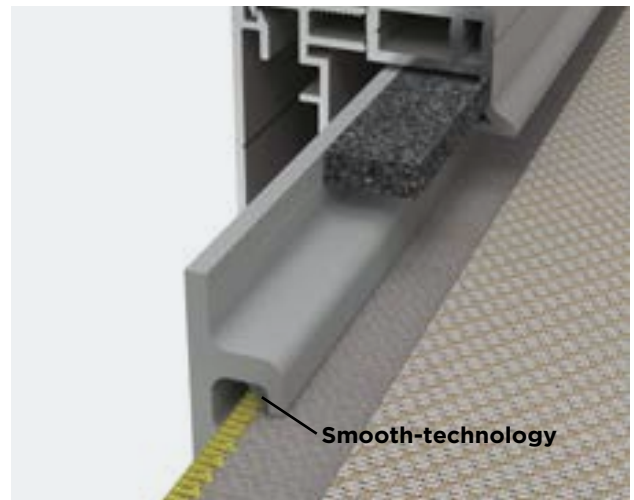


Design: Renson® emphasises the importance of design. With a wide range of colours for both textile and aluminium components, discrete integration into the façade and wrinkle-free fabric, the screen is seamlessly integrated into your home.

Dimensions of up to 6 m wide or 6 m high are possible (up to 22 m²). Comfort: Screens not only ensure a comfortable indoor climate, they also prevent annoying reflection or glare, without disturbing the view outside. The screen can be fully automated for maxi-

mum comfort. This enables you to maintain an optimal temperature, anywhere and anytime.

Sustainability: Thanks to the **Fixscreen-technology**, screens can be operated with windspeeds of up to 130 km/h, corresponding to a hurricane of 12 Beaufort. The **Smooth-technology** ensures a smooth, durable and silent movement of the zip in the side guide. With Fixscreen, Renson is pioneering in windproof screens since 15 years.





LOGGIA® PANELS



You control the amount of light that comes in. The Loggia sliding panels combine the functionality of an efficient sun screen panel with the elegant look and aesthetic design of a high-quality and contemporary concept. By sliding the panels, the owner can even influence the way sunlight and heat enters the room

(i.e. dynamic sun protection). The Loggia panels are constructed from aluminium frames and finished with screens, aluminium or wooden blades. It is also possible to opt for mobile aluminium or wooden blades, which can be manually rotated from the closed position to the fully open position, or vice versa.

BENEFITS

- Multipurpose façade elements
- Easy to use and maintain
- Aesthetic quality finish
- Dynamic sun protection thanks to moving panels





INDOOR MEETS OUTDOOR



You want your garden to be enjoyed so that you can spend as much time in it as possible. But you'll also want to continue that same beautiful, unique style around the rest of the outdoor space... because first impressions count. 1 design, 1 uniform use of colour, 1 style from the front through to the back garden... That's the idea. Thanks to the Renson® Outdoor Concept, you can enjoy your outdoor space even more.

Renson's Outdoor products such as pergolas, louvred roofs, facade cladding and garden elements, provide you with an extension to your existing living space, completely adapted to your own style and to suit your own desires. A place for the children to play outside, a place for you to relax and read a book or that cosy outside space in which to enjoy the company of friends and family.



WE ARE PROUD OF **OUR HISTORY**

A healthy living environment for everyone: that is the mission of our **Belgian family business**. That's why our baseline is '**Creating Healthy Spaces**'. We strive to achieve this in homes, offices, apartments, schools and care institutions with a combination of ventilation, sun protection and outdoor living. This focus on total concepts grants comfort, energy efficiency, endless personalization possibilities and minimalist design.

For more than 110 years, Renson® — and its 1,200 employees worldwide — has been working as a trendsetter for a healthy indoor climate and comfortable outdoor living. What began in 1909 purely as a production company has since evolved into an **innovative** and **internationally** renowned thought leading company that is always one step ahead of the future.

Renson® guarantees **quality** through local production of finished products for the Belgian market and system solutions for the international market. Thanks to these system solutions, our international dealers can produce the products locally and quickly bring them to the market.

Internationally, 10,000 constructors, planners, architects, and investors work together with Renson®. To reach consumers, we have a global **network** of 230 Ambassadors who sell, assemble, and service our products.



**POLIDORE
RENSON**
1909 - 1913



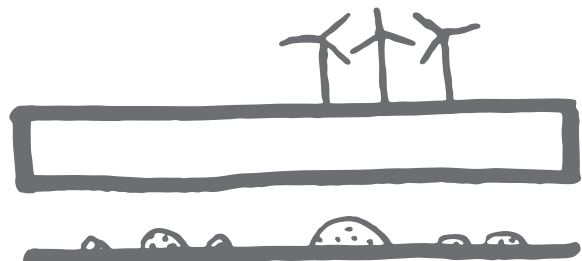
**GEORGES
RENSON**
1913 - 1950



**JAN
RENSON**
1950 - 1982



**PAUL
RENSON**
1982 - PRESENT

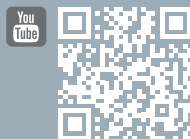




With our ventilation, sun protection and outdoor solutions we enable Architects, Project Developers and Investors to design spaces that will soon feel just as pleasant as a refreshing walk through the forest. That is Renson's promise.

Creating healthy spaces

Experience the future of Renson®:



Software & hardware platform for automating a house, building or community.



Parcelbox



Offers a wide range of door hardware



Sliding door gear

For more information and online tools:
www.renson.eu